

SirsiDynix Unicorn® Library Management System provides an open, versatile, scalable solution for managing all technical and public services within the library – enabling your institution to be more productive while providing your users with the highest quality of service. Unicorn’s n-Tier client/server architecture ensures the flexibility, scalability, and modularity needed for SirsiDynix to expand, evolve, and update the system to keep it fresh and effective and to meet the needs of all types and sizes of libraries.



Serving as Unicorn’s user interface is the SirsiDynix Enterprise Portal Solution (EPS), a versatile library information management platform that provides library users with a true, one-stop interface to the high-quality information, resources, and services offered by your institution.

EPS assists libraries to present materials from the library’s collection, databases, digital archive, RSS feeds, virtual reference, ILL – even powerful federated search capabilities – in contexts that make sense. Using one interface for many resources and services makes EPS easier for information seekers to discover what they need – from within your library walls or from anywhere in the world.

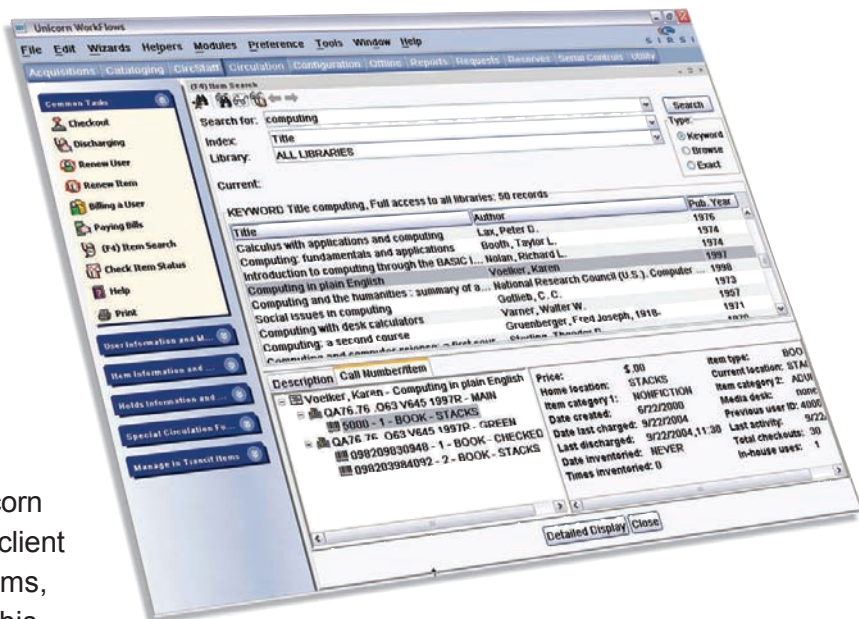
- **Flexible, scalable, and versatile** client/server architecture that meets current library needs and evolves for the future
- **Relational database management** system (RDBMS) technology at the heart of Unicorn offers the full power of today’s leading RDBMS solutions
- **Based on industry standards** to provide compatibility with other technologies and systems
- **Application programming interfaces (APIs)** to all modules provide more and deeper access to the system, resulting in greater ability to customize Unicorn to meet unique needs
- **Comprehensive ILS functionality** for all aspects of library management – from Circulation, Cataloging, Serials, and Acquisitions to Outreach, Electronic Resource Management, advanced user portals, and more
- **Developed to run on a variety of server platforms**, so the library is able to choose the platform best suited for its environment

Choosing Unicorn is a wise investment. Unicorn's forward-looking design allows SirsiDynix to expand the system without altering the technology foundation – or the investments you have already made. In addition, Unicorn is built entirely on library and computer industry standards and protocols that ensure the system's ability to interoperate and support other leading technologies and systems.

Unicorn features WorkFlows[®] as its single, integrated staff client with all staff modules accessible from this one interface for all Unicorn public and technical services software. This client operates on a variety of workstation platforms, including both Windows and Mac. Having this single, Java[®]-based client with a consistent look and feel means that you'll save training time as well as streamline your daily operations.

Unicorn meets the needs of increasingly diverse populations whether in local communities or around the globe. Incorporation of the Unicode standard offers libraries an easy way to reach out to the entire community, regardless of language. Since the client handles all presentation features, search and display is supported for multiple languages for both staff and users.

Because SirsiDynix provides application programming interface (API) access to all Unicorn software modules, you can customize your system to integrate with



The item search screen of WorkFlows – Unicorn's single, integrated staff client

other systems and technologies to create specialized reports or other specialized linkages and tools. Since SirsiDynix has formal partnerships with dozens of major technology companies, you can add functions like automated telephone notification, sophisticated interlibrary loan solutions, PC and print management, and more to your system to create an ILS environment that meets your institution's special needs. With Unicorn as your library's infrastructure (on your library's own servers or through SirsiDynix's ASP hosting services), there's virtually no limit on how you can meet the changing needs of your users.

Bringing Knowledge **to Life.**